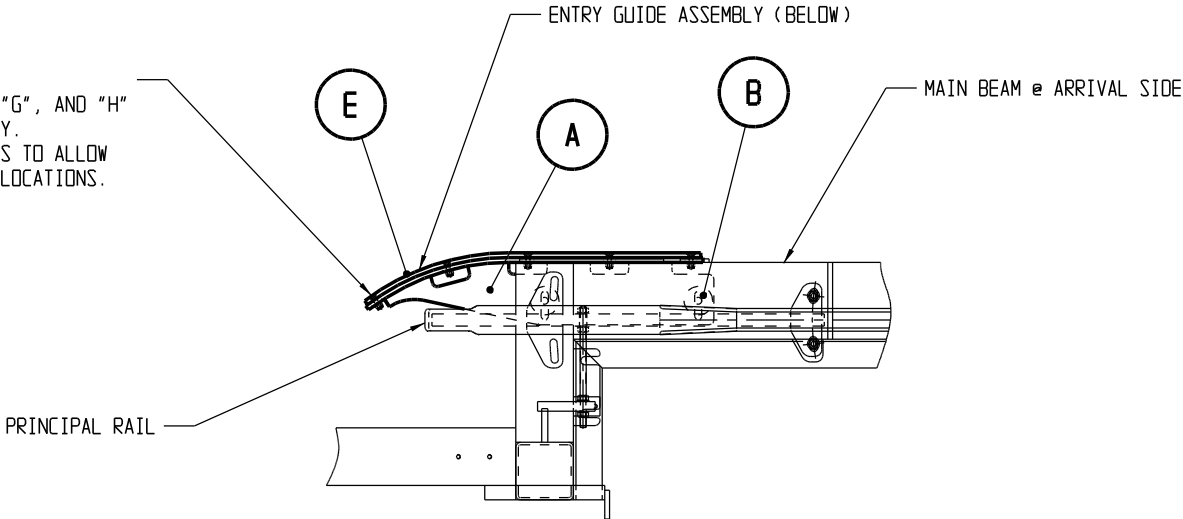
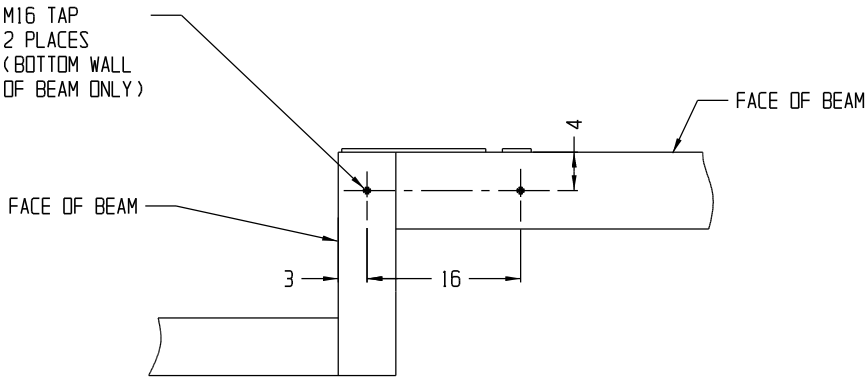


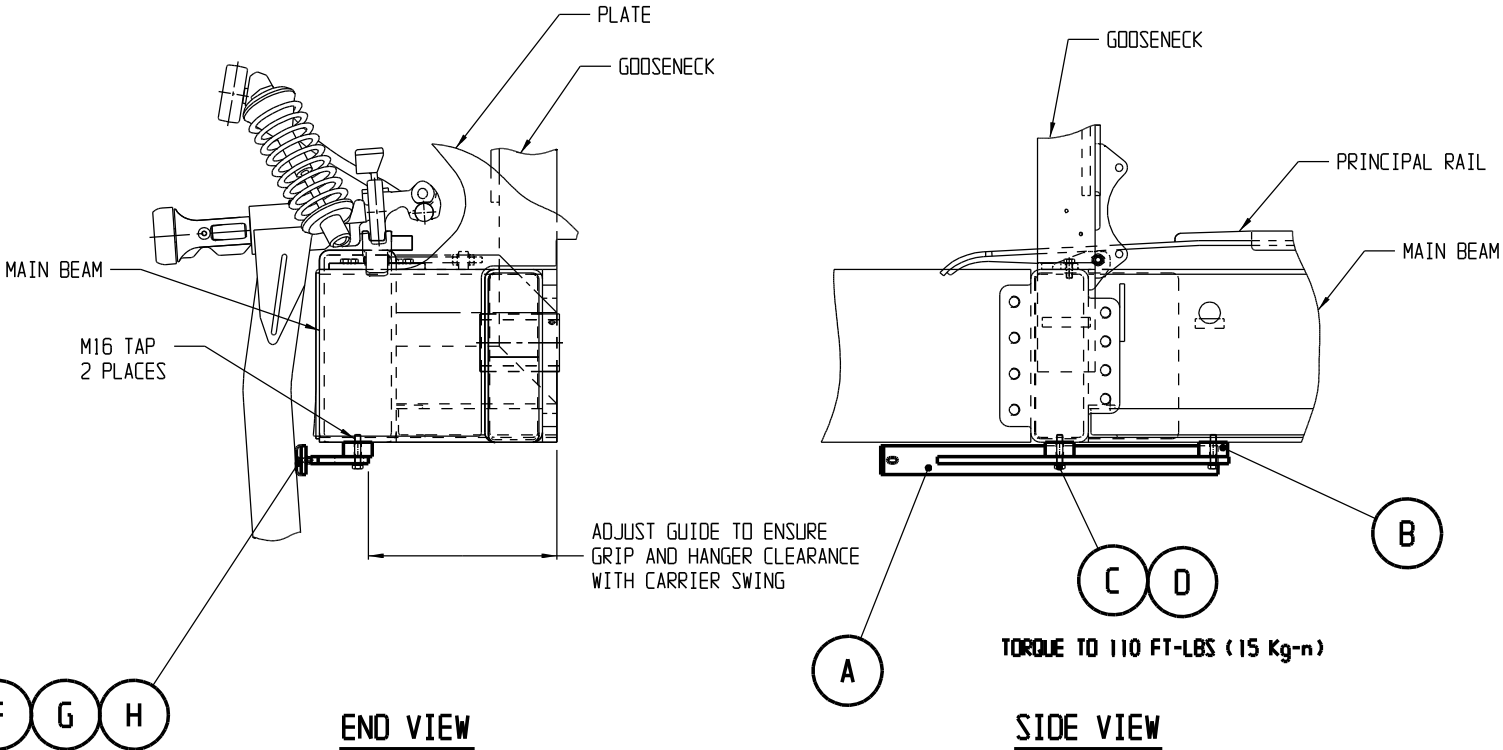
NOTE:  
TIGHTEN INDEX "F", "G", AND "H"  
AT END LOCATION ONLY.  
SNUG OTHER LOCATIONS TO ALLOW  
EXPANSION AT OTHER LOCATIONS.



PLAN VIEW



PLAN VIEW AT BOTTOM OF BEAM  
LAYOUT OF TAPPED HOLES



(5) PLACES  
SEE NOTE ABOVE

NOTE:  
INSTALL ENTRY GUIDE AT ARRIVAL SIDE.  
(VIEW SHOWN FOR CLOCKWISE ROTATION.  
COUNTERCLOCKWISE IS OPPOSITE.)

NOTE:  
WORKS FOR ALL OMEGA TERMINALS

H	5	WASHER M12U	PLATED		059106	
G	5	NYLON LOCKNUT M12	8.8 PLATED		058186	
F	5	BOLT FHC/90 12 x 40/40	10.9 PLATED		5057238	
E	1	UHMW @ ENTRY GUIDE			3228.142	A
D	2	WASHER JZC16	PLATED		059288	
C	2	BOLT HM 16 x 80/38	8.8 PLATED		057055	
B	2	ENTRY GUIDE SPACER - THROUGH BOLT			3228.140	A
A	1	ENTRY GUIDE MOUNT			4078.911	B
INDEX	REQ'D	DESCRIPTION	MATERIAL	WT./ LBS.	REFERENCE	FORMAT

REV	DESCRIPTION OF REVISION	DATE	BY	QUANTITY:	PRODUCTION USE ONLY
				USED FOR:	
				DUE DATE:	
OMEGA TERMINAL DRIVE & RETURN  <b>ENTRY GUIDE ASSEMBLY</b> ENTRY GUIDE ASSEMBLY - TAPPED OPTION  * This DRAWING on its DESIGN are Proprietary to POMMA OF AMERICA. * Duplication without the Permission of POMMA OF AMERICA is Prohibited. *				* FABRICATION * FRACTIONAL ..... ±1/16 ANGULAR ..... ±1/2°	
				* MACHINING * DECIMAL W/.X ... ±.05 DECIMAL W/.XX .. ±.01 DECIMAL W/.XXX . ±.005 ANGULAR ..... ±.1°	
CABLE TRANSPORT SYSTEMS				TOLERANCES * UNLESS INDICATED *	
SKILIFTS CHAIRLIFTS GONDOLAS TRAMWAYS				TREATMENT: / TOTAL WT./LBS.: / "Material"	
DRAWN BY: ROP DESIGNED BY: JH/ROP DATE: 4/1/03 SCALE(S): 1/20				MARKING REQ'D.: Port # QTY. REQ'D.: 1/TERMINAL MARK LOCATION: / OTHER REF.: /	
POMMA OF AMERICA GRAND JUNCTION COLORADO, USA				FORMAT: B DRAWING NUMBER: US3015.173 REVISION: /	