

Appendix F

Photographs



**TECHNICAL
SAFETY BC**



Image 1 – The tube ride (July 25, 2024).



Image 2 – Area of the tube slide failure covered in a tarp at the time of inspection.



Image 3 - Failed section removed at the time of inspection. The void beneath the slide was up to 5 inches in some areas.



Image 4 – Patched areas of the flume near the failure.



Image 5 – Bubbled section of flume as shown by the water pooling at the edges.



Image 6 – Side view of another bubbled section on a separate section of flume.



Image 7 – Measuring tape held flat to show the extent of bubbling from the area shown in Image 6.



Image 8 – Ground contours pushing in and deforming the fiberglass.



Image 9 – Exposed resin on one section of flume.



Image 10 – Patched and cracked section at the bottom of a sloped flume. Cracks highlighted with arrows.



Image 11 – Close-up of the cracked flume section.



Image 12 – Another crack located at the base of a sloped flume section.

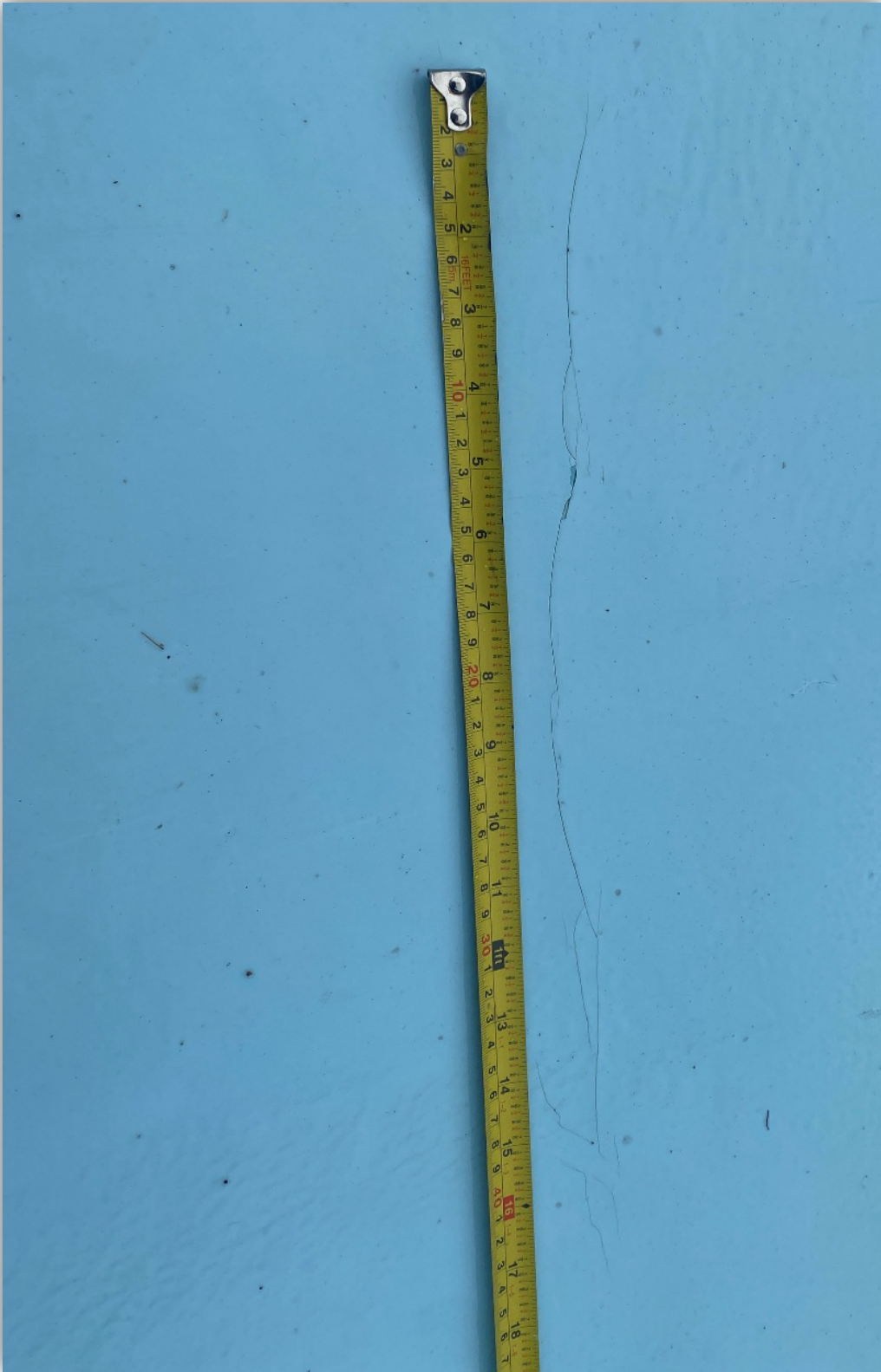


Image 13 – Close-up of the crack shown in image 12.



Image 14 – A crack located on the side of a fiberglass pool section.



Image 15 - A cracked fiberglass pool edge.